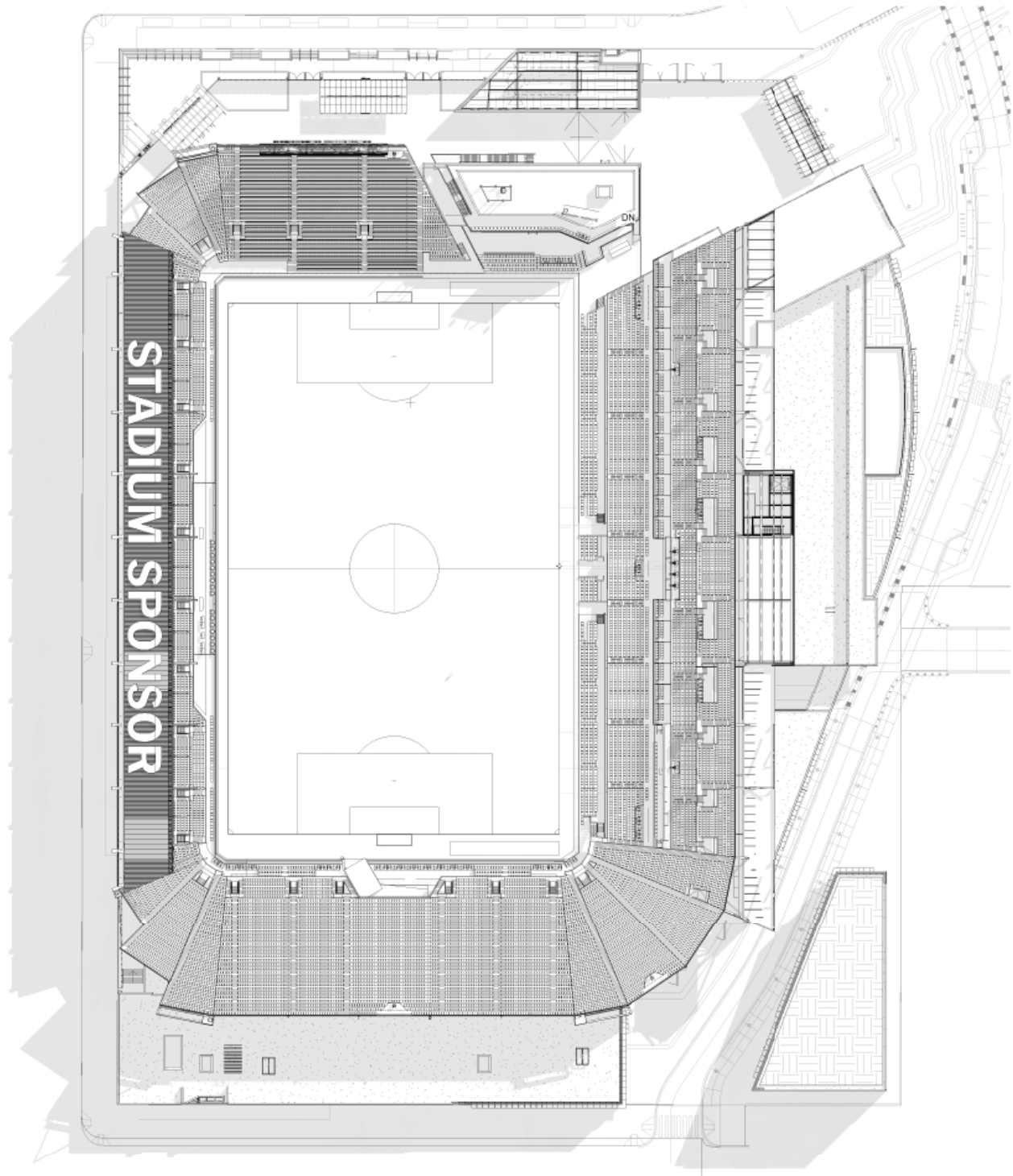
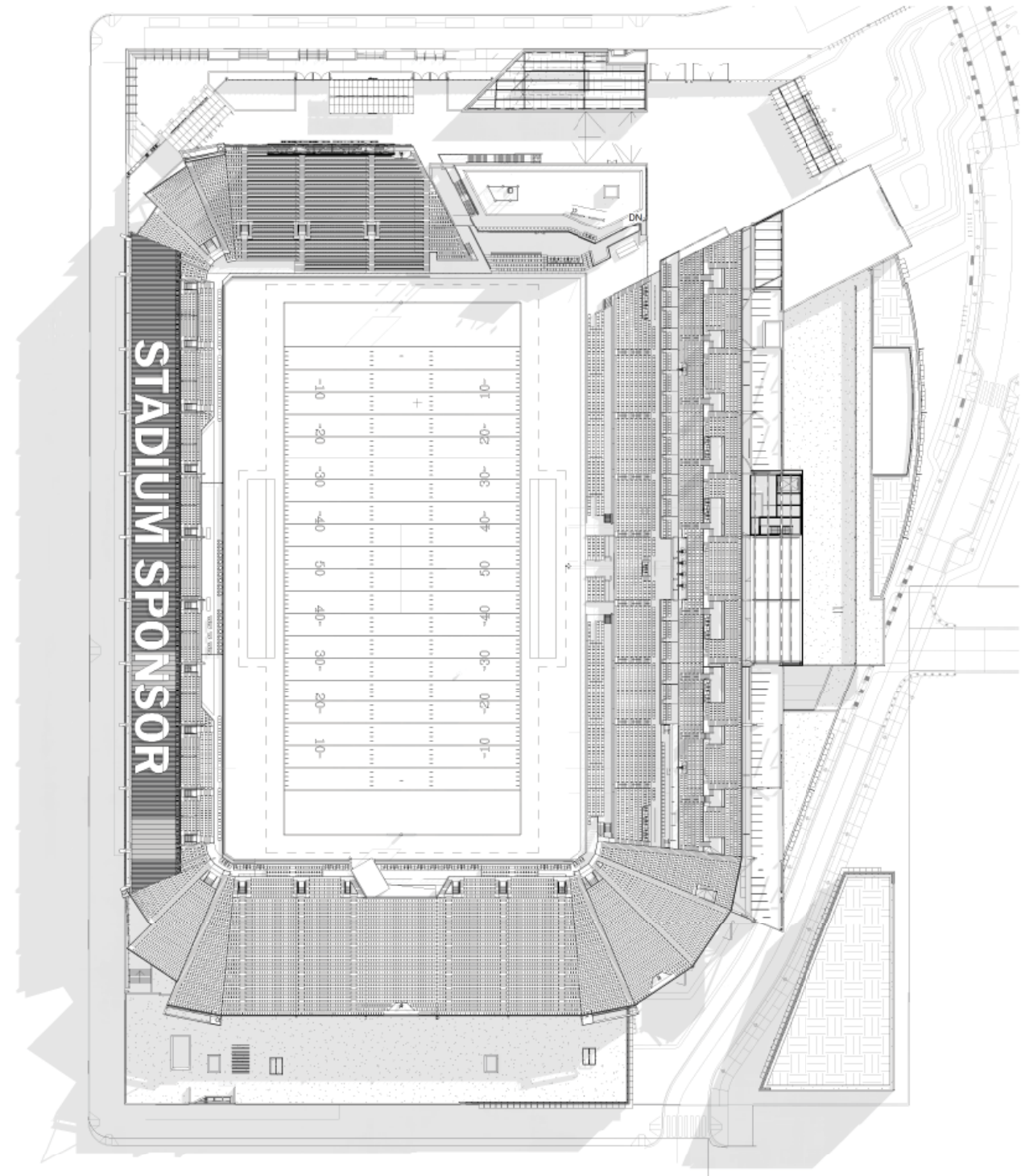


STADIUM MULTI USE CONFIGURATIONS



② SOCCER FIELD LAYOUT
1" = 50'-0"

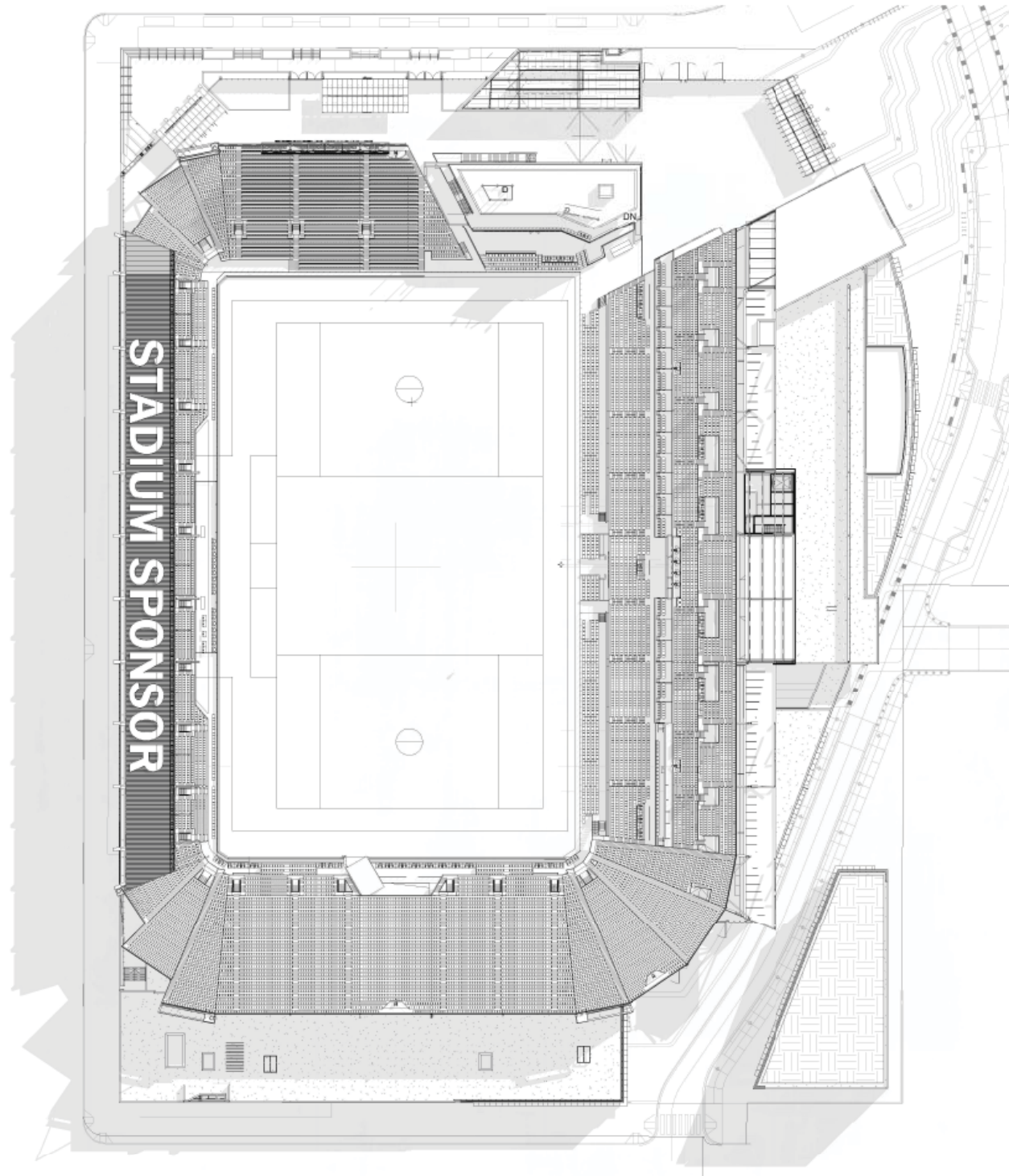


① FOOTBALL FIELD LAYOUT
1" = 50'-0"

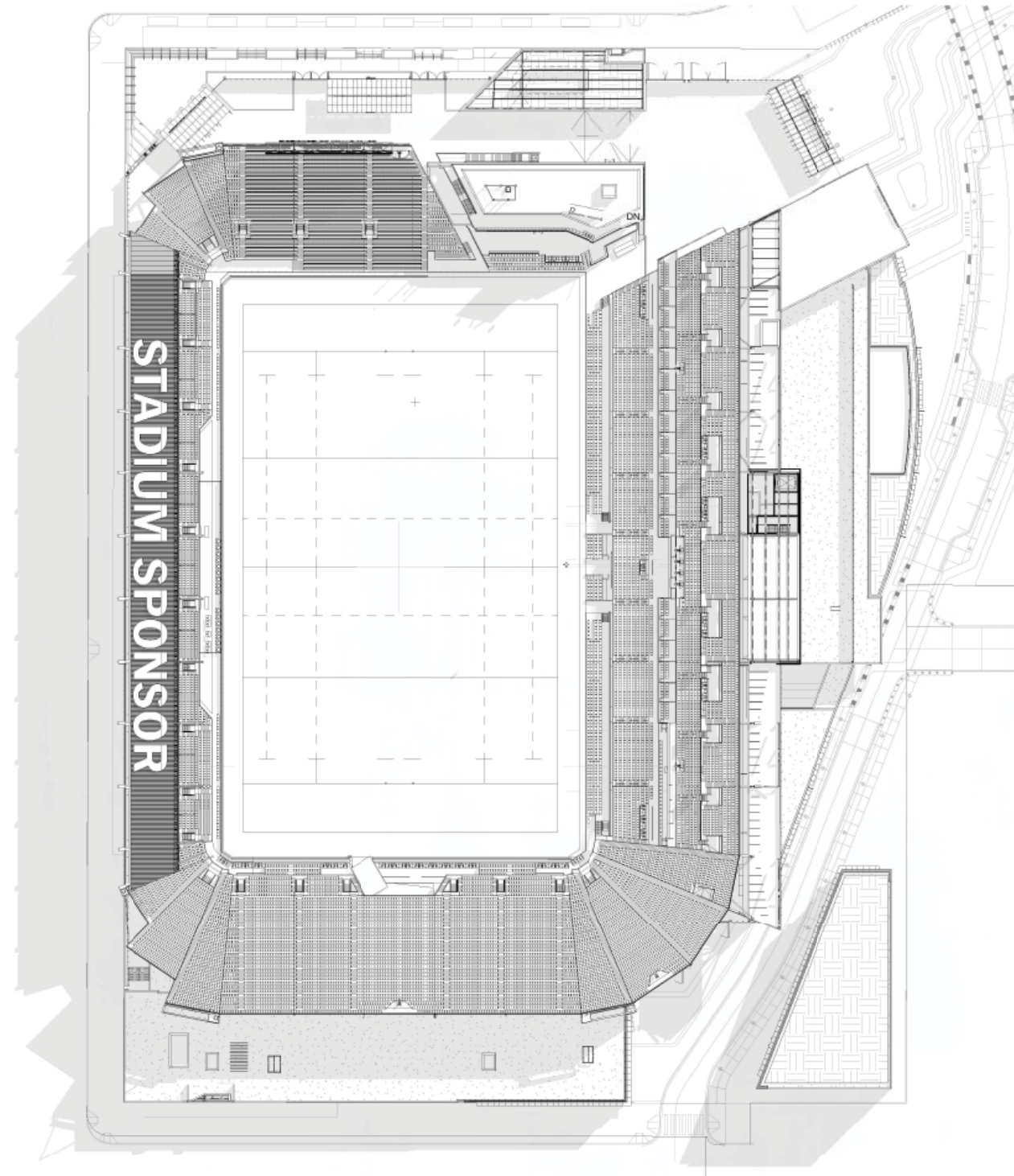
POPULOUS
Marshall | Moya Design



DC UNITED SOCCER STADIUM
100 Potomac Avenue, SW
Washington, DC 20024



② LACROSSE FIELD LAYOUT
1" = 50'-0"

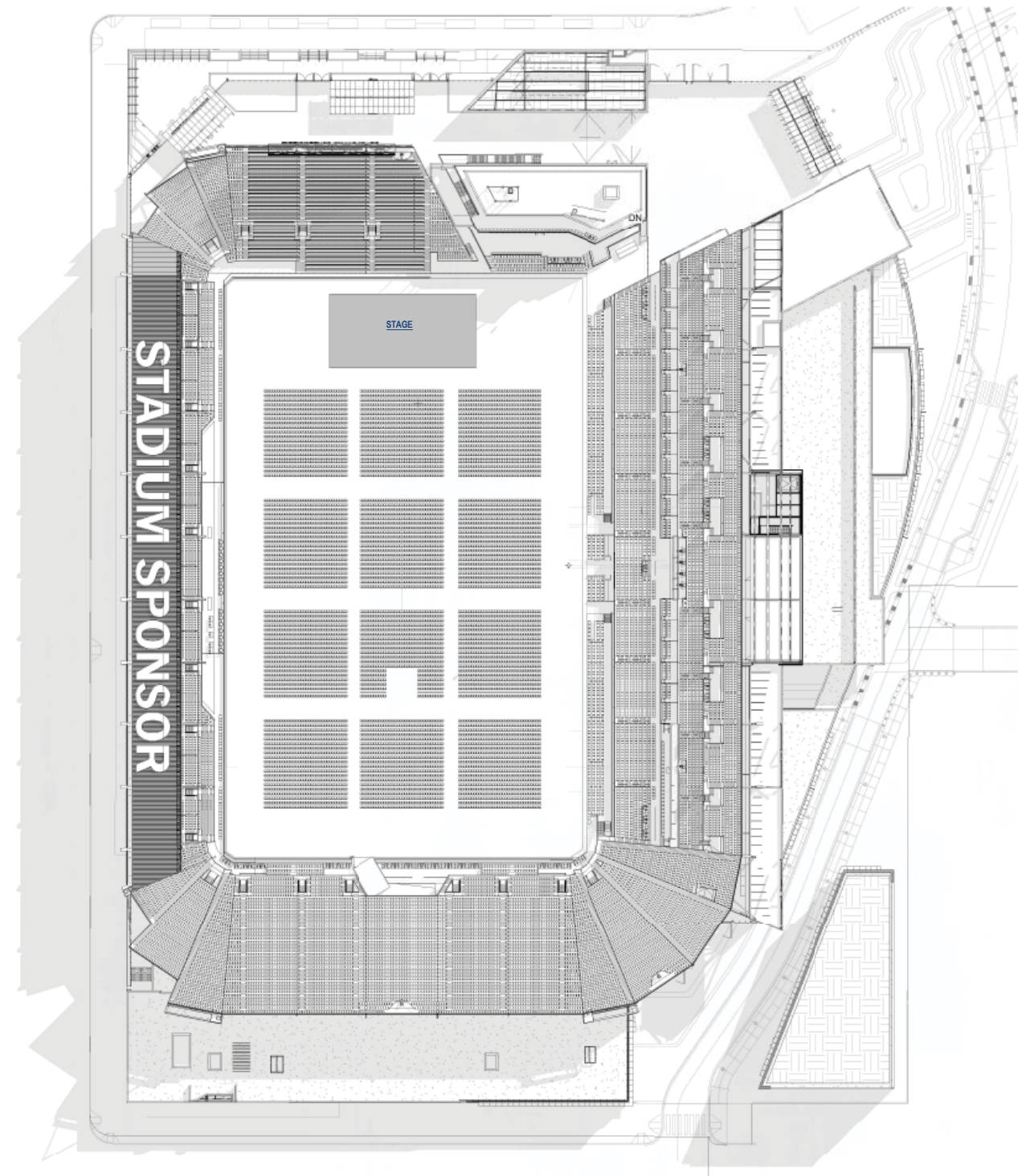


① RUGBY FIELD LAYOUT
1" = 50'-0"

POPULOUS
Marshall | Moya Design



DC UNITED SOCCER STADIUM
100 Potomac Avenue, SW
Washington, DC 20024



1 CONCERT FIELD LAYOUT
1" = 50'-0"

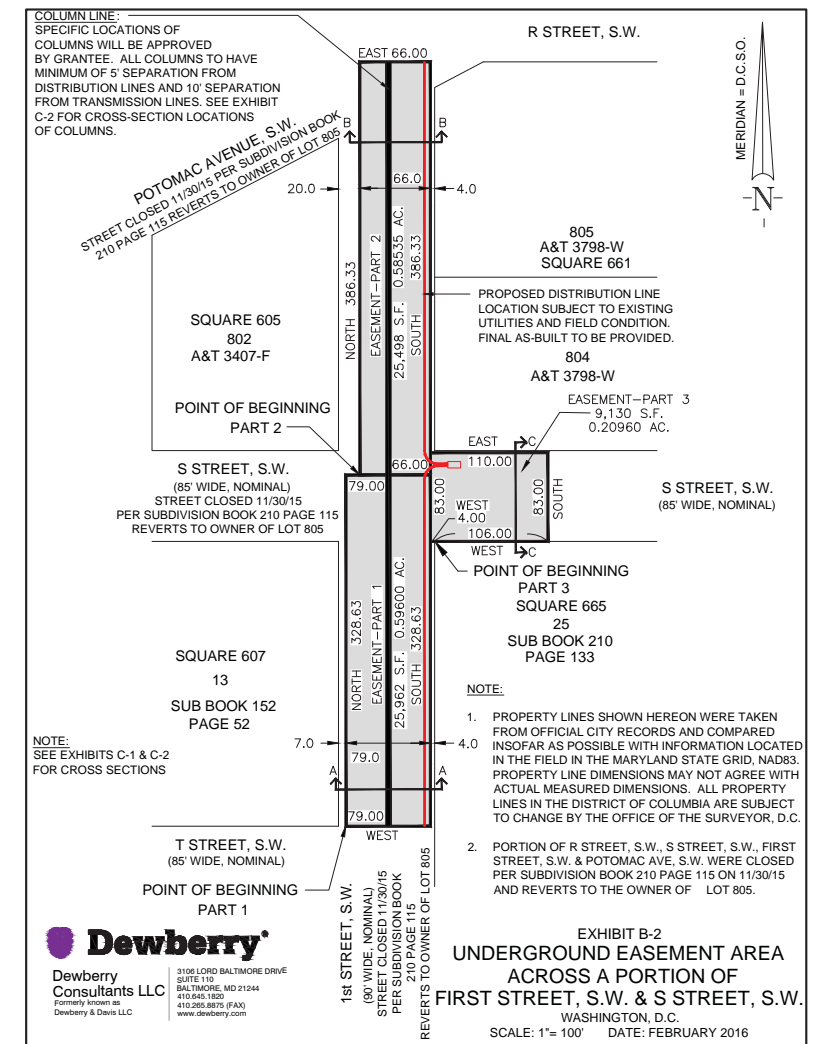
POPULOUS
Marshall | Moya Design



DC UNITED SOCCER STADIUM
100 Potomac Avenue, SW
Washington, DC 20024

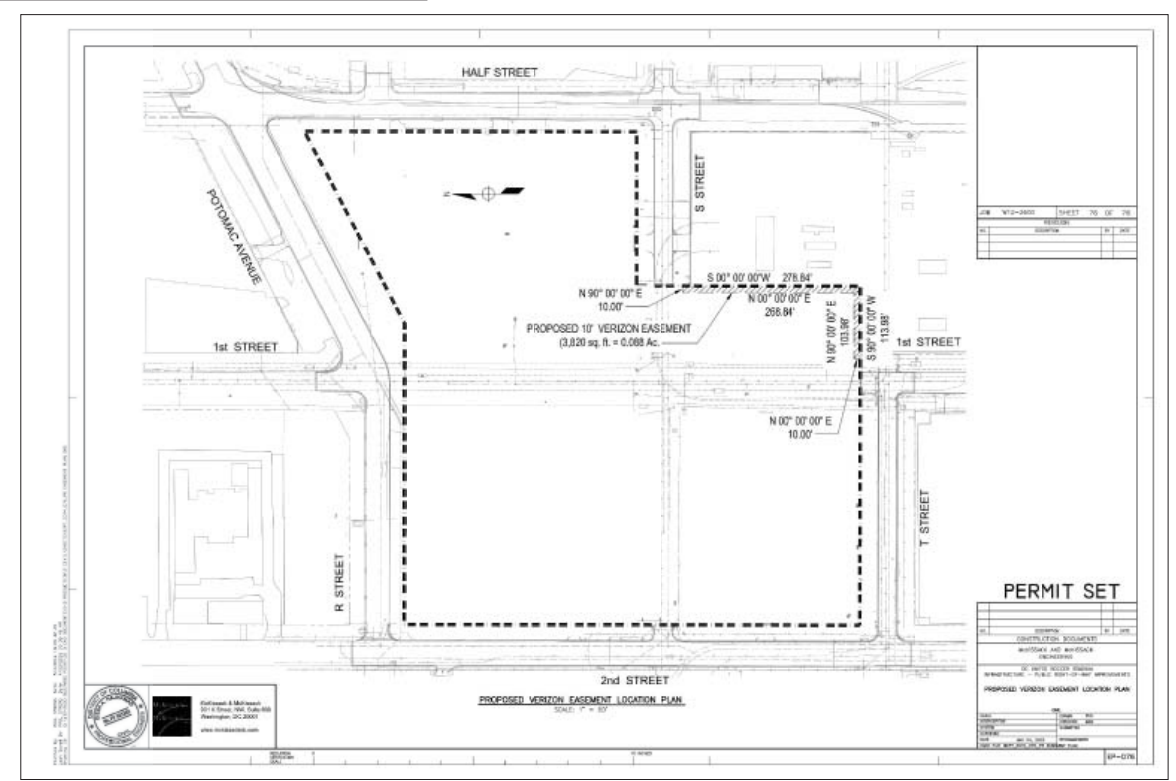
ABBREVIATIONS		ABBREVIATIONS:	
ABAN	ABANDONED	LEV	LONG LEG VERTICAL
AFI	ABOVE FINISH FLOOR	LP	LOW POINT OR LIGHT POLE
AGIP	AT GRADE INLET PROTECTION	LR	LONG RADIUS
ALUM	ALUMINUM	LVB	LOWER VERTICAL BEND
APPROX	APPROXIMATE	MAX	MAXIMUM
ASTM	AMERICAN SOCIETY FOR TESTING AND MATERIALS	MIN	MINIMUM
BET	BITUMINOUS	MD	METAL DECK
BL	BELINE	MG	MEET GRADE
BF	BLIND FLANGE	MI	MECHANICAL JOINT
BLDG	BUILDING	MO	MASONRY OPENING
BFL	BUTTERFLY VALVE	MON	MONUMENT
BR	BACK OF WALK	MP	MANUFACTURER
CJ	CONSTRUCTION JOINT	MH	MANHOLE
CL	CENTERLINE	MISC	MISCELLANEOUS
C&G	CURB AND GUTTER	NA	NEUTRAL AXIS
CB	CATCH BASIN	N	NORTH
CG	CHANGE OF GRADE	NIC	NOT IN CONTRACT
CL	CLEARANCE	NO	NUMBER
CLF	CHAIN LINK FENCE	NOB	NOMINAL
CMU	CONCRETE MASONRY UNIT	NS	NON-SHRINK
CC	CLEAN OUT	N/A	NOT APPLICABLE
COL	COLUMN	OC	ON CENTER
COMM	COMMUNICATIONS	OD	OUTSIDE DIAMETER
CONC	CONCRETE	PC	POINT OF CURVE
CONT	CONTINUOUS	POC	PORTLAND CEMENT CONCRETE
CRS	CHEMICAL RECEIVING STATION	PCCP	PRESTRESSED CONCRETE CYLINDER PIPE
CW	CITY WATER	PC-F	PRECOMPRESSED JOINT FILLER
C/C	CENTER TO CENTER	PF	PLAIN END
D	DRAIN	PSL	PROFILE GRADE LINE
DB	DUCT BANK	PI	POINT OF INTERSECTION
DI	DROP INLET	PJF	PREFORMED JOINT FILLER
DIP	DUCTILE IRON PIPE	L	PLATE
DI (Ø)	DIAMETER	PM	PROCESS MANHOLE
DN	DOWN	PCC	POINT ON CURVE
DRN	PROCESS DRAIN	POT	POINT ON TAKEOFF
DV	DIVERTER VALVE	PROP	PROPOSED
DWG	DRAWING	PRV	PRESSURE RELIEF VALVE
DWV	DRAIN, WASTE, AND VENT	PV	PLUG VALVE
E	EAST	PVC	POLYVINYL CHLORIDE
EA	EACH	R	RADIUS
EF	EACH FACE	RCF	REINFORCED CONCRETE PIPE
EJ	EXPANSION JOINT	RD	ROOF DRAIN
ELEC	ELECTRIC	RED	REDUCER
ELEV OR BL	ELEVATION	REF	ROOF EXHAUST FAN
EMH	ELECTRIC MANHOLE	REQ'D	REQUIRED
ETC	ETCETERA	RPT	POINT OF TANGENCY
ETR	EXISTING TO REMAIN	RR	RAILROAD
EW	EACH WAY	RIP	RIP-RAP INFLOW PROTECTION
EXIST	EXISTING	R	RIGHT
EXP	EXPANSION	S	SOUTH
FCA	FLANGED COUPLING ADAPTER	SA	SANITARY SEWER
FD	FLOOR DRAIN	SCH	SCHEDULE
FE	FIRE EXTINGUISHER	SC	STABILIZED CONSTRUCTION ENTRANCE
FF	FIRST FLOOR	SD	STORM DRAIN
FH	FIRE HYDRANT	SMH	SANITARY SEWER MANHOLE
FLG	FLANGE	SSF	SUPER SILT FENCE
FLR	FLOOR	SLV	SHORT LEG VERTICAL
FM	FORCE MAIN	SQ	SQUARE
FT	FEET	SS	STAINLESS STEEL
GALV	GALVANIZED	ST	STORM SEWER
GRS	GALVANIZED RIGID STEEL	STNH	STORM SEWER MANHOLE
GND	GROUND	STA	STATION
GPR	GROUND PENETRATING RADAR	TR	TRENCH
GSP	GALVANIZED STEEL PIPE	TDC	TOP OF CASTING
HB	HOSE BIBB	TGG	TOP OF GRATING
HDR	HORIZONTAL	TOS (T/S)	TOP OF STEEL OR TOP OF SLAB
HP	HIGH POINT	TSS	TEMPORARY STONE OUTLET STRUCTURE
HSB	HIGH STRENGTH (BOLT)	TYP	TYPICAL
ID	INSIDE DIAMETER	UND	UNLESS NOTED OTHERWISE
IN	INCH	UVB	UPPER VERTICAL BEND
INS	INSULATION	VAF	VARIABLE
INP	INVERT	VC	VERTIFIED CLAY
LB	LONG		

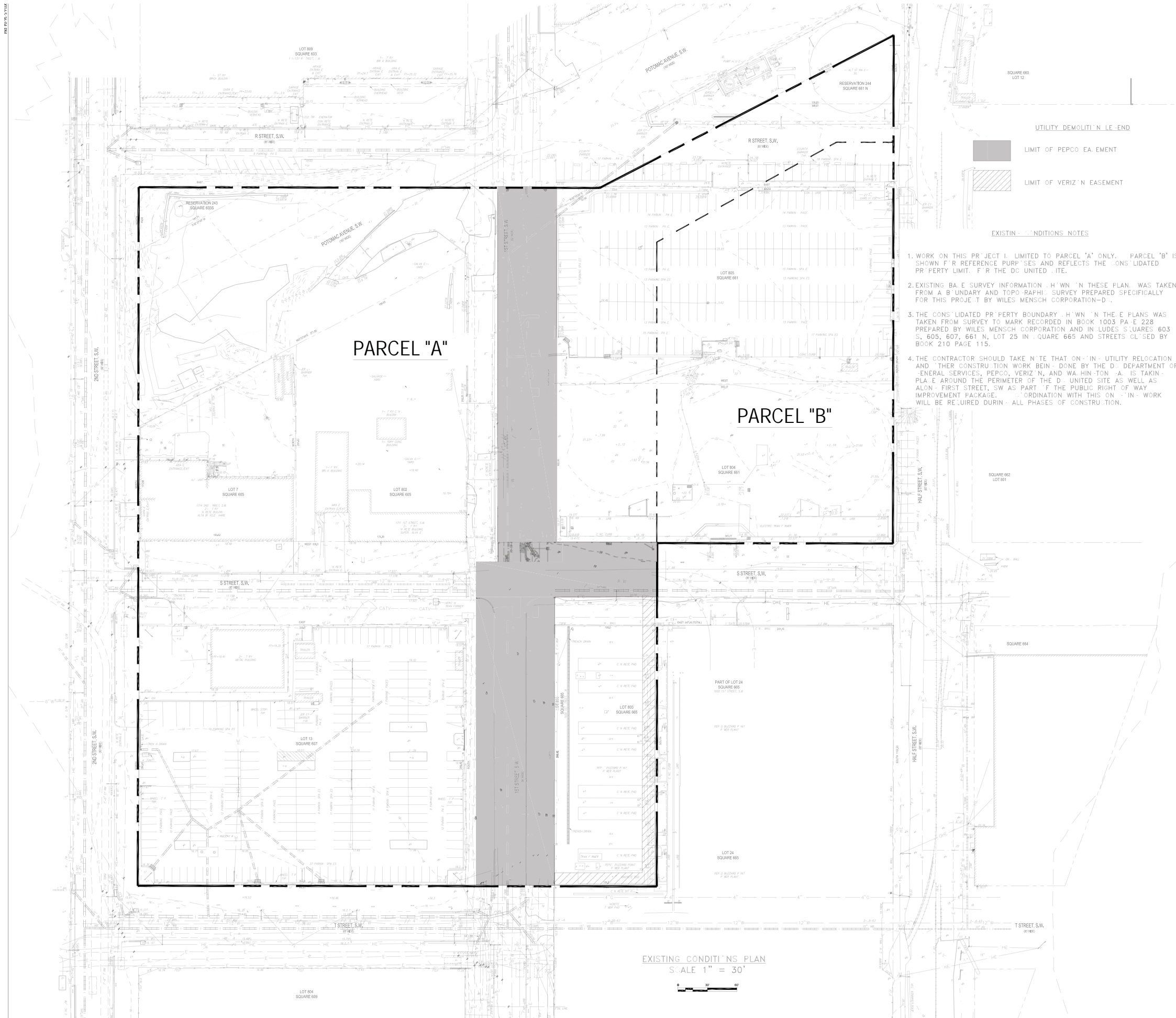
SYMBOLS		
DESCRIPTION	EXISTING	MODIFIED
HIGH-MAST LIGHT POLE	N/A	⊙
LIGHT POLE	⊙ LP	⊙ LP
CONTOUR	⊖	⊖
SIGN	⊙	⊙
SPOT ELEVATION	X 15.30	X 15.30
SURVEY MONUMENT	⊙	⊙
MANHOLE	⊙ MH	⊙ MH
ELECTRICAL MANHOLE	⊙ XEEMHX	⊙ XEEMHX
COMMUNICATIONS MANHOLE	⊙ OR	⊙ XCDMXX
CITY WATER VALVE CASING	⊙	⊙ XWVHX
STORM SEWER MANHOLE	⊙	⊙ XSDMXX
SANITARY SEWER MANHOLE	⊙	⊙ XSDMXX
CATCH BASIN	⊙ CB	⊙ XCBXX
UTILITY POLE	⊙	N/A
UTILITY CAP	N/A	⊖
CURB & GUTTER	—	—
CHAIN LINK FENCE	X	X
PARAPET GUARDRAIL OR ALUM GUARDRAIL AS NOTED	—	—
W BEAM GUARDRAIL	—	—
CITY WATER	—	—
ROOF DRAIN PIPE	—	—
STORM SEWER PIPE	—	—
SANITARY SEWER PIPE	—	—
ELEC/COMM DUCTBANK	—	—
PLANT PROCESS LINE	—	—
CHEMICAL LINE	—	—
ASPHALTIC CONCRETE PAVEMENT SECTION	—	—
TREE	—	—
SOIL SECTION	—	—
FIRE DEPT. CONNECTION	—	—
FIRE HYDRANT	—	—
YARD HYDRANT	—	—
EDGE OF WATER	—	N/A
RAILROAD TRACKS	—	N/A
REMOVE (DEMOLISH)	—	N/A
ONE WAY TRAFFIC TRAFFIC FLOW	—	N/A
HORIZONTAL TO VERTICAL	N/A	4:1
POST	—	—
SATELLITE DISH	—	—
UNIDENTIFIED OBJECT	—	N/A



- SURVEY NOTES**
- EXISTING BASE SURVEY INFORMATION SHOWN ON THESE PLANS WAS TAKEN FROM A BOUNDARY AND TOPOGRAPHIC SURVEY PREPARED SPECIFICALLY FOR THIS PROJECT BY WILES MENSCH CORPORATION-DC WITH THE LAST DATE OF FIELD SURVEY BEING JANUARY 12, 2016.
 - THE CONSOLIDATED PROPERTY BOUNDARY SHOWN ON THESE PLANS WAS TAKEN FROM SURVEY TO MARK RECORDED IN BOOK 1003 PAGE 228 PREPARED BY WILES MENSCH CORPORATION AND INCLUDES SQUARES 603 S, 605, 607, 661 N, LOT 25 IN SQUARE 665 AND STREETS CLOSED BY BOOK 210 PAGE 115.
 - ELEVATIONS SHOWN ARE REFERENCED TO DCDPW DATUM (BM 12-7 & 12-11), MERIDIAN REFERENCED TO DCSO NORTH BY HOLDING 2ND STREET, SW AS N-S.
 - VISIBLE ABOVE GROUND UTILITIES WERE SHOWN ON THE SURVEY. SUBSURFACE UTILITIES, WHERE SHOWN, FOLLOW ASCE 38-02 QUALITY LEVELS A-D. A: VISUALLY VERIFIED VIA TEST HOLES; B: DESIGNATED AND SURVEYED; C: RECORD INFORMATION CORRELATED WITH SURVEYED SURFACE FEATURES; D: RECORD INFORMATION ONLY. WHERE SUBSURFACE UTILITIES HAVE BEEN APPARENTLY DESIGNATED BY OTHERS ON SITE, THOSE UTILITY LOCATIONS HAVE BEEN SHOWN AS QUALITY LEVEL C. OTHER UTILITIES MAY EXIST THAT ARE NOT SHOWN ON THE SURVEY. UNLESS OTHERWISE NOTED ABOVE, UTILITIES SHOWN ON THE SURVEY REPRESENT QUALITY LEVEL C.
 - THE PROPERTY IS IDENTIFIED AS ZONE X - AREAS DETERMINED TO BE OUTSIDE THE 0.2% ANNUAL CHANCE OF FLOODING AS IDENTIFIED ON FLOOD INSURANCE RATE MAP (FIRM) COMMUNITY PANEL 11000100 57C, EFFECTIVE DATE SEPTEMBER 27, 2010.

- VOLUNTARY CLEANUP ACTION PLAN NOTES**
- THE CONTRACTOR SHALL TAKE NOTE THAT CONTAMINATED SOIL AND OTHER MATERIALS EXIST ONSITE THAT MUST BE REMOVED IN ACCORDANCE WITH THE DOEE APPROVED VOLUNTARY CLEANUP ACTION PLAN (VCAP) AND HUMAN HEALTH RISK ASSESSMENT (HRS) FOR THE DC UNITED PROJECT SITE. THESE DOCUMENTS ARE AVAILABLE FROM THE CONSTRUCTION MANAGER AND DESCRIBE THE EXCAVATION PROCEDURES RELATED TO THE SOIL REMEDIATION.
 - FUGITIVE DUST CONTROL DURING DEMOLITION AND EXCAVATION OPERATIONS IS ALSO REQUIRED UNDER THE REQUIREMENT OF THE VCAP AND HRS. A SEPARATE SPECIFICATION IS AVAILABLE FROM THE CONSTRUCTION MANAGER THAT DESCRIBES THE REQUIREMENTS FOR FUGITIVE DUST CONTROL ON THE PROJECT.

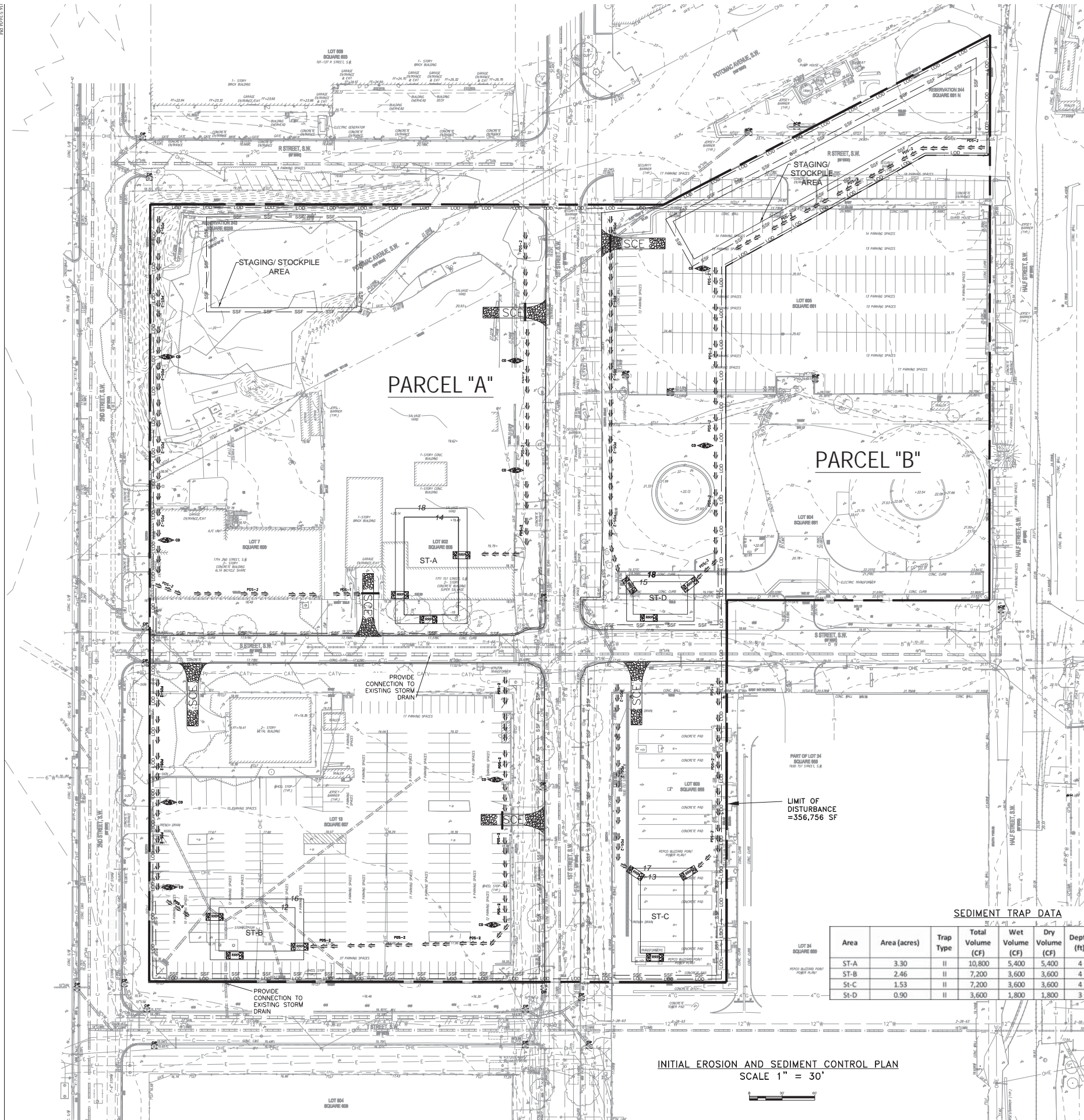




- EXISTING CONDITIONS NOTES**
1. WORK ON THIS PROJECT IS LIMITED TO PARCEL 'A' ONLY. PARCEL 'B' IS SHOWN FOR REFERENCE PURPOSES AND REFLECTS THE CONSOLIDATED PROPERTY LIMIT FOR THE DC UNITED SITE.
 2. EXISTING BASE SURVEY INFORMATION SHOWN ON THESE PLANS WAS TAKEN FROM A BOUNDARY AND TOPOGRAPHIC SURVEY PREPARED SPECIFICALLY FOR THIS PROJECT BY WILES MENSCH CORPORATION-D.
 3. THE CONSOLIDATED PROPERTY BOUNDARY SHOWN ON THESE PLANS WAS TAKEN FROM SURVEY TO MARK RECORDED IN BOOK 1003 PAGE 228 PREPARED BY WILES MENSCH CORPORATION AND INCLUDES SQUARES 603 S, 605, 607, 661 N, LOT 25 IN SQUARE 665 AND STREETS CLS'D BY BOOK 210 PAGE 115.
 4. THE CONTRACTOR SHOULD TAKE NOTE THAT ON-SITE UTILITY RELOCATION AND OTHER CONSTRUCTION WORK BEING DONE BY THE DC DEPARTMENT OF GENERAL SERVICES, PEPCO, VERIZON, AND WASHINGTON GAS LIGHTS IS TAKING PLACE AROUND THE PERIMETER OF THE DC UNITED SITE AS WELL AS ALONG FIRST STREET, SW AS PART OF THE PUBLIC RIGHT OF WAY IMPROVEMENT PACKAGE. COORDINATION WITH THIS ON-SITE WORK WILL BE REQUIRED DURING ALL PHASES OF CONSTRUCTION.

EXISTING CONDITIONS PLAN
SCALE 1" = 30'





EROSION AND SEDIMENT CONTROL LEGEND

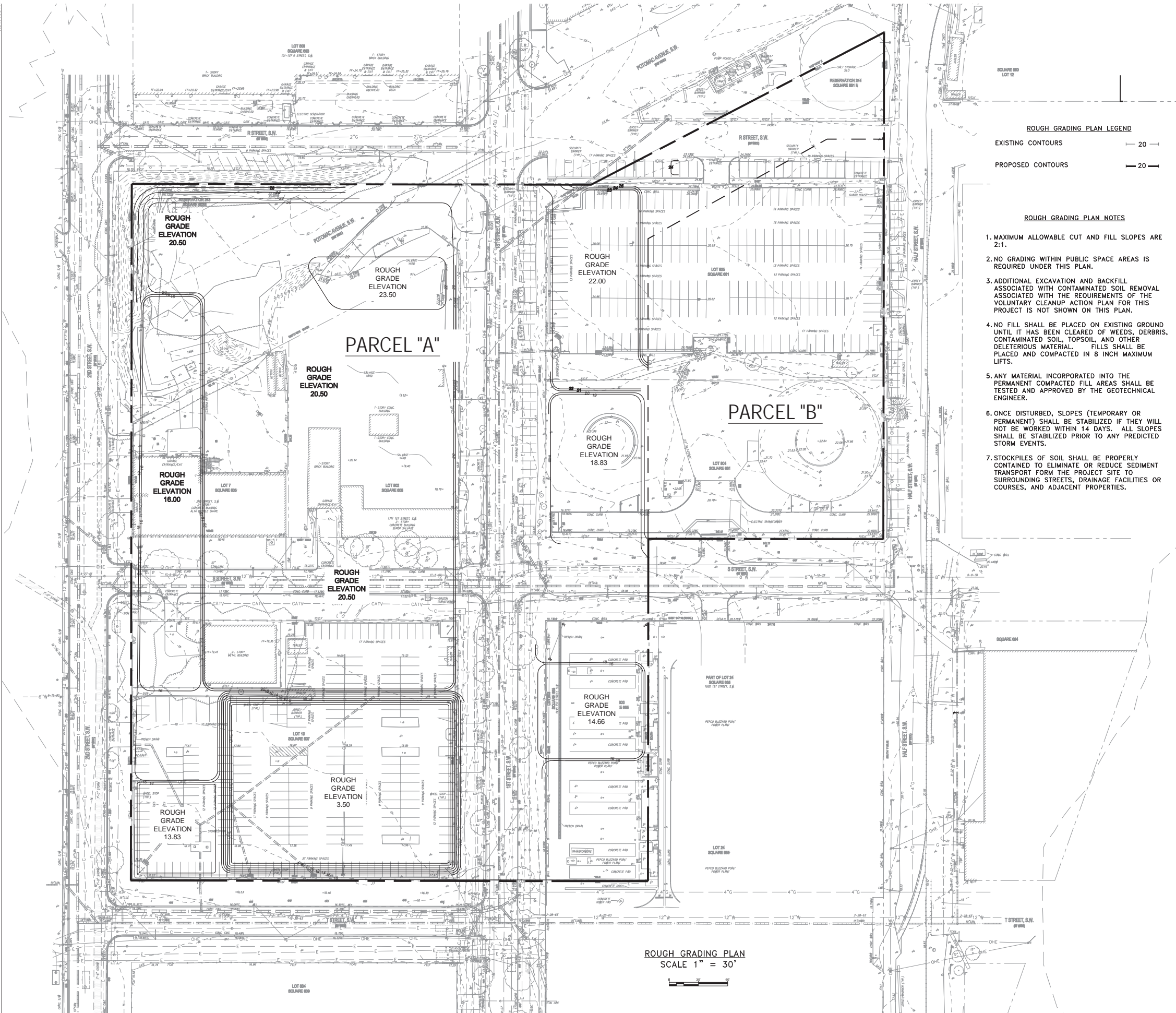
SUPER SILT FENCE	SSF
PERIMETER DIKE/SWALE	PD-1
LIMIT OF DISTURBANCE (LOD)	LOD
STABILIZED CONSTRUCTION ENTRANCE	SC-E
RIPRAP OUTLET SEDIMENT TRAP	ST-1
RIPRAP INFLOW PROTECTION	RIP-1
CURB INLET PROTECTION	CIP
AT GRADE INLET PROTECTION	AGIP
STONE CHECK DAM	SCD
TEMPORARY STONE OUTLET STRUCTURE	TSOS

- EROSION AND SEDIMENT CONTROL SEQUENCE OF CONSTRUCTION FOR DEMOLITION AND EXCAVATION PACKAGE WORK**
1. NOTIFY THE DISTRICT DEPARTMENT OF ENVIRONMENT (DOEE) TO HOLD A PRE-CONSTRUCTION MEETING AT (202) 536-2977. NOTIFY DOEE AT LEAST 72 HOURS BEFORE COMMENCING ANY LAND DISTURBING ACTIVITY.
 2. INSTALL ALL EROSION CONTROL DEVICES IN ACCORDANCE WITH THE APPROVED PLAN. NOTIFY THE DOEE SEDIMENT CONTROL INSPECTOR AND OBTAIN APPROVAL BEFORE PROCEEDING FURTHER.
 3. INSTALL SECURITY FENCING AROUND THE PERIMETER OF THE STADIUM SITE. INSTALL SAFETY FENCING AROUND THE PERIMETER OF ALL OPEN EXCAVATION AREAS.
 4. COORDINATE ALL DEMOLITION AND EXCAVATION WORK WITH THE REQUIREMENTS OF THE VOLUNTARY CLEANUP ACTION PLAN.
 5. REMOVE ALL EXISTING PAVEMENT AND BASE EXCEPT FOR S STREET SW AND FIRST STREET SW. THESE AREAS ARE TO REMAIN IN PLACE FOR AS LONG AS POSSIBLE TO CREATE A WORKING PLATFORM.
 6. REMOVE SLABS ON-GRADE AND BELOW GRADE FOUNDATION RELATED TO FORMER BUILDING STRUCTURES. REMOVE EXISTING UTILITY LINES AND OTHER SITE FEATURES AS INDICATED.
 7. COORDINATE UTILITY REMOVAL WORK WITH THE WORK BEING DONE AROUND THE PERIMETER OF THE SITE WITH THE VARIOUS PUBLIC REALM PLAN CONSTRUCTION CONTRACTORS.
 8. AT THE END OF DEMOLITION AND EXCAVATION OPERATIONS STABILIZE ALL AREAS PRIOR TO THE START OF FOOTING TO GRADE WORK WHICH IS PART OF ANOTHER PERMIT PACKAGE.

SEDIMENT TRAP DATA

Area	Area (acres)	Trap Type	Total Volume (CF)	Wet Volume (CF)	Dry Volume (CF)	Depth (ft)	Length (ft)	Width (ft)	Elevation at Bottom	Elevation at Rim	Remarks
ST-A	3.30	II	10,800	5,400	5,400	4	90	50	18	14	Stone Riprap Outlet
ST-B	2.46	II	7,200	3,600	3,600	4	70	40	16	12	Stone Riprap Outlet
ST-C	1.53	II	7,200	3,600	3,600	4	70	40	17	13	Stone Riprap Outlet
ST-D	0.90	II	3,600	1,800	1,800	3	50	30	18	15	Stone Riprap Outlet

INITIAL EROSION AND SEDIMENT CONTROL PLAN
SCALE 1" = 30'



ROUGH GRADING PLAN LEGEND
 EXISTING CONTOURS — 20 —
 PROPOSED CONTOURS — 20 —

- ROUGH GRADING PLAN NOTES**
1. MAXIMUM ALLOWABLE CUT AND FILL SLOPES ARE 2:1.
 2. NO GRADING WITHIN PUBLIC SPACE AREAS IS REQUIRED UNDER THIS PLAN.
 3. ADDITIONAL EXCAVATION AND BACKFILL ASSOCIATED WITH CONTAMINATED SOIL REMOVAL ASSOCIATED WITH THE REQUIREMENTS OF THE VOLUNTARY CLEANUP ACTION PLAN FOR THIS PROJECT IS NOT SHOWN ON THIS PLAN.
 4. NO FILL SHALL BE PLACED ON EXISTING GROUND UNTIL IT HAS BEEN CLEARED OF WEEDS, DERBRIS, CONTAMINATED SOIL, TOPSOIL, AND OTHER DELETERIOUS MATERIAL. FILLS SHALL BE PLACED AND COMPACTED IN 8 INCH MAXIMUM LIFTS.
 5. ANY MATERIAL INCORPORATED INTO THE PERMANENT COMPACTED FILL AREAS SHALL BE TESTED AND APPROVED BY THE GEOTECHNICAL ENGINEER.
 6. ONCE DISTURBED, SLOPES (TEMPORARY OR PERMANENT) SHALL BE STABILIZED IF THEY WILL NOT BE WORKED WITHIN 14 DAYS. ALL SLOPES SHALL BE STABILIZED PRIOR TO ANY PREDICTED STORM EVENTS.
 7. STOCKPILES OF SOIL SHALL BE PROPERLY CONTAINED TO ELIMINATE OR REDUCE SEDIMENT TRANSPORT FROM THE PROJECT SITE TO SURROUNDING STREETS, DRAINAGE FACILITIES OR COURSES, AND ADJACENT PROPERTIES.

ROUGH GRADING PLAN
 SCALE 1" = 30'